

3φ PAD MOUNT  
Δ/Y TRANSFORMER



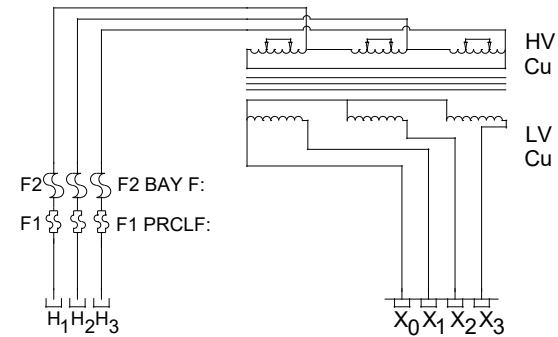
#38 TERRACON PLACE  
WINNIPEG, MB CANADA

ELECTRICAL, TESTING, APPARATUS, COMMISSIONING, SERVICE & SUPPLY

kVA: **750**  
HV: **12470V**  
HV BIL kV:  
TYPE II

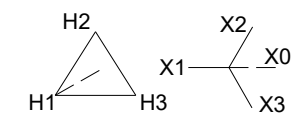
LV: **600Y/347V**  
LV BIL kV:

CORE & COIL WEIGHT: **kg**  
TANK & FIT WEIGHT: **kg**  
FLUID: **Mineral Oil**  
LITERS: **L,** **kg**  
TOTAL WEIGHT: **kg**



CONTAINS NO DETECTABLE LEVEL OF PCB  
(LESS THAN 1 PPM) AT TIME OF MANUFACTURE.

VOLTS	POS.	AMPS
13094	A	33.1
12782	B	33.9
12470	C	34.7
12158	D	35.6
11847	E	36.6



LIQUID FILLED/LIQUID IMMERSSED  
DISTRIBUTION TRANSFORMER

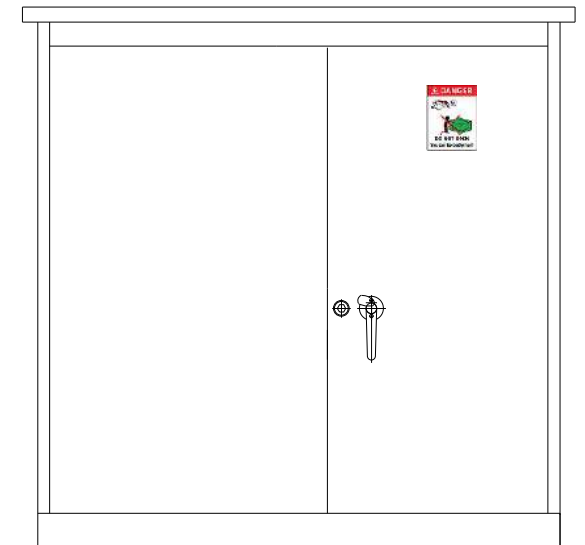
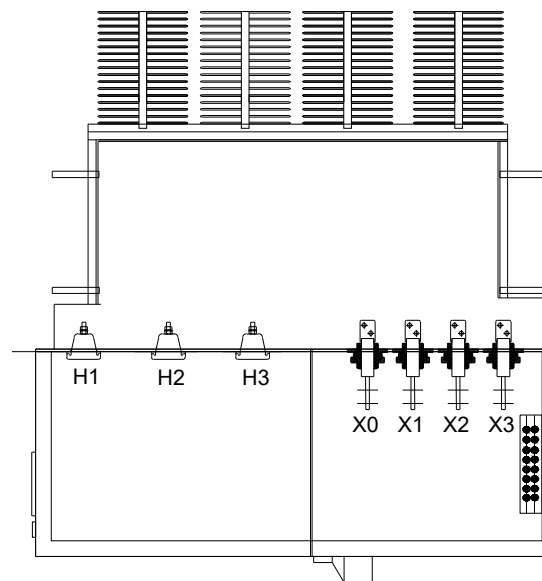
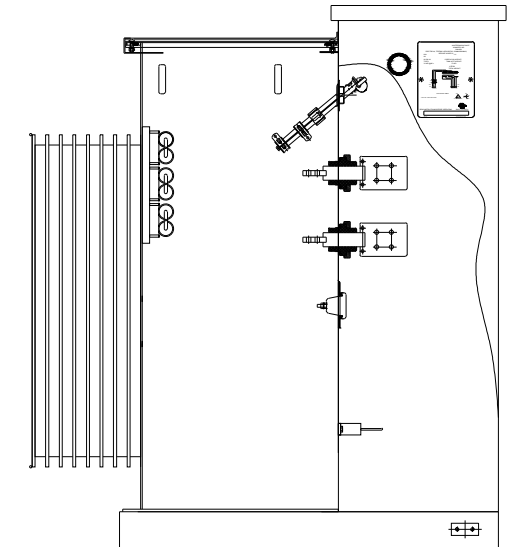
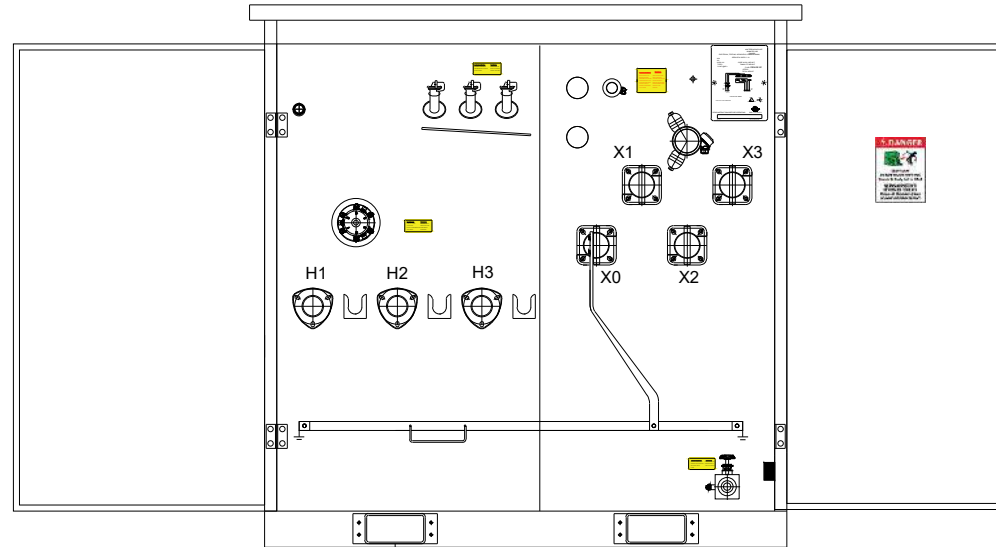
MAX. AMPS @ 750kVA  
%IZ@ BASE kVA AND RATED VOLTAGE  
CSA C802.1-13 EFFICIENCY COMPLIANT



READ INSTRUCTIONS BEFORE OPERATING. BUILT TO C227.4

SER. NO.:

DATE OF MANUFACTURE:



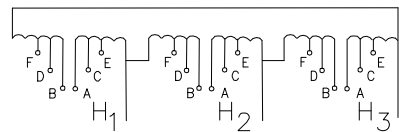
3φ LIQUID FILLED  
POWER TRANSFORMER



#38 TERRACON  
PLACE WINNIPEG, MB  
CANADA

ELECTRICAL, TESTING, APPARATUS, COMMISSIONING, SERVICE & SUPPLY

MVA @65°C RISE: 10/10.33	CORE&WINDING: kg
MVA @0°C AMBIENT:	TANK&FITTING: kg
HV: 24.94 kV	INSULATING LIQUID: L, kg
HV BIL: 150V	TOTAL MASS: kg
LV: 4.16GrdY/2.4 kV	WINDING MATERIAL: COPPER
LV BIL: 75V	OIL TYPE: Class A
LV CURRENT(A): 1388	OPERATING kPa: +70 -55
%Z@85°C:	MAX kPa: 101
VECTOR GROUP: Dyn1	
PCB: <1ppm	
CSA STD SPEC: C88:16	



CONT 65C° RISE ONAN 60HZ

VOLTS	POS.	AMPS
26187	A-B	220.50
25564	B-C	225.90
24940	C-D	231.50
24317	D-E	237.40
23693	E-F	243.70



CONTAINS NO DETECTABLE LEVEL OF PCB  
(LESS THAN 1 PPM) AT TIME OF MANUFACTURE.

TANK WILL WITHSTAND FULL VACUUM X1 X2 X3 X0

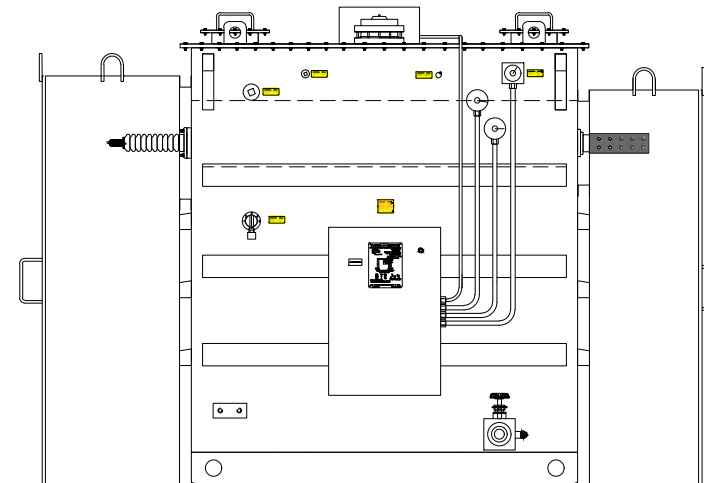
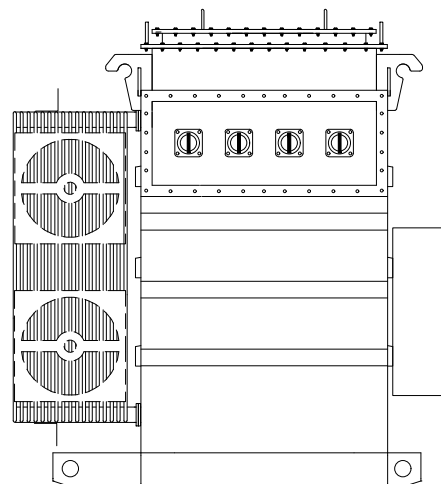
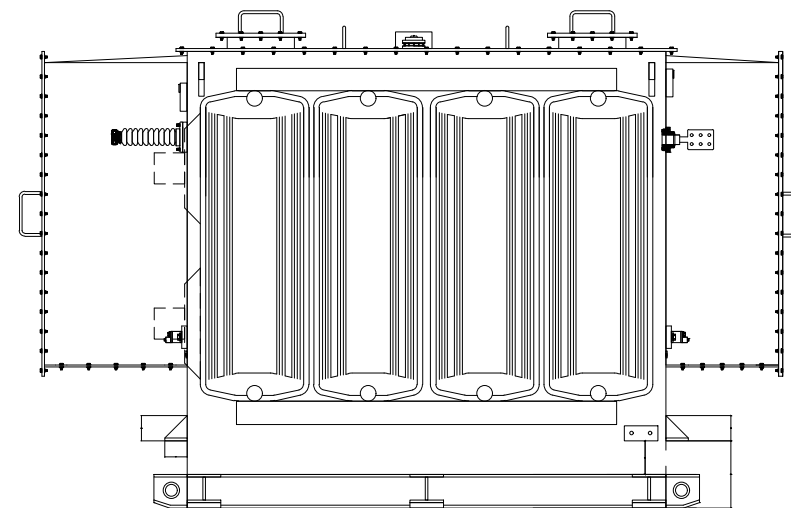
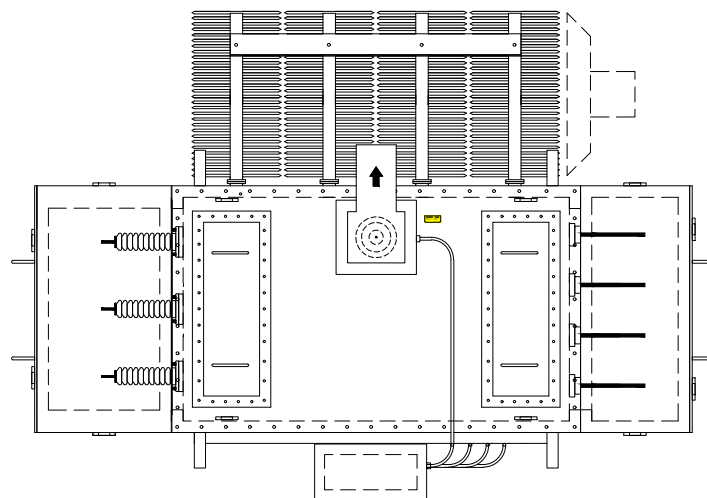
CAUTION!

1. READ INSTRUCTIONS BEFORE OPERATING
2. DO NOT OPERATE DE-ENERGIZED TAP CHANGER WITH THE TRANSFORMER ENERGIZED

CSA C802.3-15 EFFICIENCY

SER. NO.:

DATE OF MANUFACTURE:



3φ STEP DOWN  
DRY TYPE  
TRANSFORMER



38 TERRACON PLACE  
WINNIPEG, MB CANADA

ELECTRICAL, TESTING, APPARATUS, COMMISSIONING, SERVICE & SUPPLY

kVA: 30

PRIMARY: 480V

PRIMARY BIL kV: 30

COND: Cu

FREQ: 60 HZ

TYPE: 1

TEMP. RISE: 115°C

INSULATION CLASS: 220°C

SECONDARY: 120/208V


SECONDARY BIL kV: 10

COND: Cu

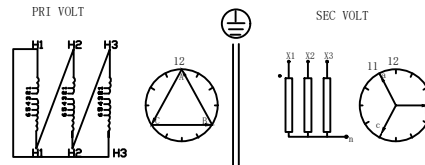
CLASS: AN

C&C WEIGHT: kg

TOTAL WEIGHT: kg

% IMP.:  @100°C

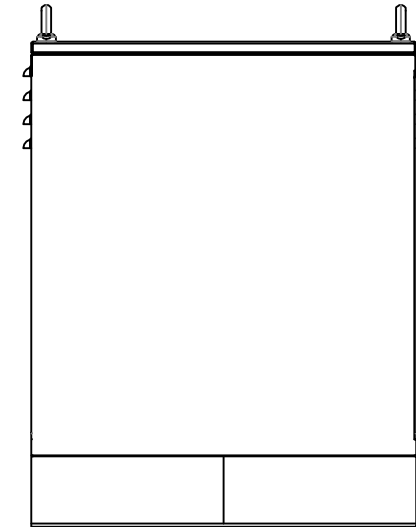
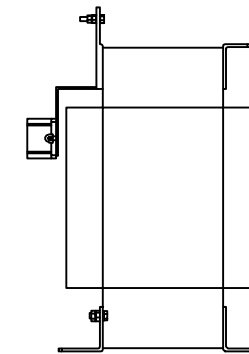
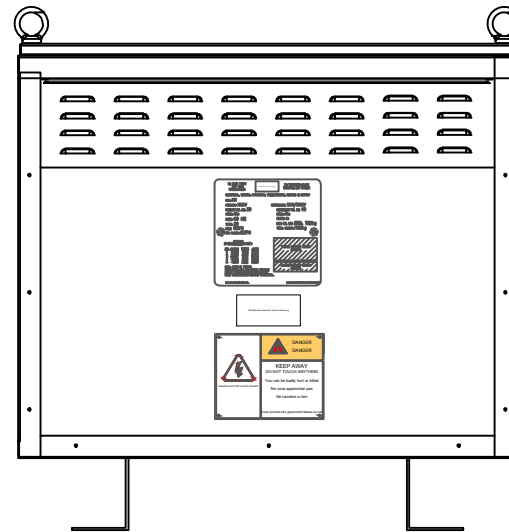
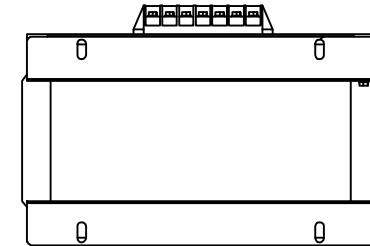
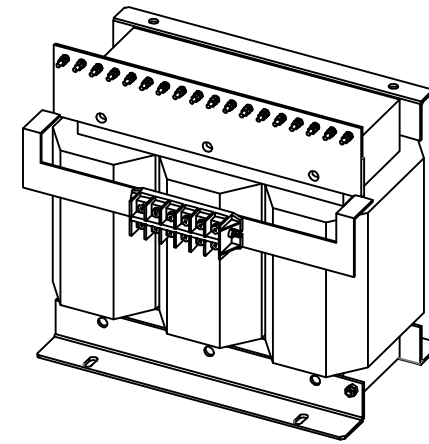
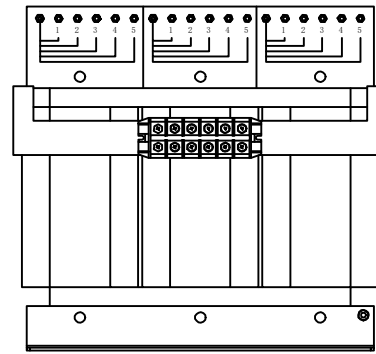
NO.	RANGE	VOLTS	AMPS
1	+5.0%	504	34.4
2	+2.5%	492	35.2
3	RATED	480	36.1
4	-2.5%	468	37.0
5	-5.0%	456	38.0



MAX. AMPS @ 30 kVA  
%IZ@ BASE kVA AND RATED VOLTAGE  
C802.2-18 EFFICIENCY COMPLIANT  
READ INSTRUCTIONS BEFORE OPERATING.

SER. NO.:

DATE OF MANUFACTURE:



1φ POLE MOUNT  
TRANSFORMER



38 TERRACON PLACE  
WINNIPEG, MB CANADA

ELECTRICAL, TESTING, APPARATUS, COMMISSIONING, SERVICE & SUPPLY

kVA: 50  
HV: 13.8 kV  
HV BIL kV: 95

LV: 347 V  
LV BIL kV: 30

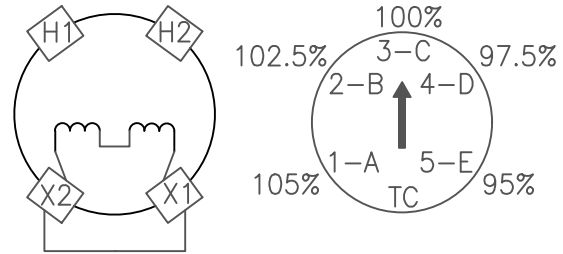
FLUID: mineral oil  
LITERS: L, kg

% IMP.:  @85°C

TOTAL WEIGHT: kg  
POLARITY: ADDITIVE

ONAN CONT 65°C RISE ONAN 60HZ  
CONTAINS NO DETECTABLE LEVEL OF PCB  
(LESS THAN 1 PPM) AT TIME OF MANUFACTURE.

NO.	RANGE	VOLTS	AMPS
1-A	+5.0%	14490	6.90
2-B	+2.5%	14145	7.07
3-C	RATED	13800	7.25
4-D	-2.5%	13455	7.43
5-E	-5.0%	13110	7.63



WARNING! OFF-CIRCUIT TAP CHANGER (TC) OPERATE ONLY WHEN  
TRANSFORMER IS DE-ENERGIZED.

MAX. AMPS @ 50kVA  
%IZ@ BASE kVA AND RATED VOLTAGE

BUILT TO CSA C2.1:06

READ INSTRUCTIONS BEFORE OPERATING.

SER. NO.:

DATE OF MANUFACTURE; MONTH, YEAR

